

# LandMark™ 20IMU eXT SDK

## LandMark™ 20IMU eXT

### Software Development Kit (SDK)

- **Turn-Key Solution for LandMark™ 20 IMU eXT on User's PC**
- **All Cabling, Interface Connectors, and Software Included and Ready for Use**
- **Easy Integration of Direct IMU RS485 to PC's USB Interface**
- **Includes PC Display Software**
- **Data Record Capability**
- **User Defined Bandwidth Settings and Data Output Rate on IMU**
- **Self-Contained Power Supply with either Internal Battery or User Supplied Power**
- **Battery Supply Has 19 Hours of Operating Life *Typical***
- **Self-Test Switch**



**Gladiator Technologies, Inc.**



Copyright © 2009 Gladiator Technologies, Inc.

Rev. Jul1009  
SN: 0001

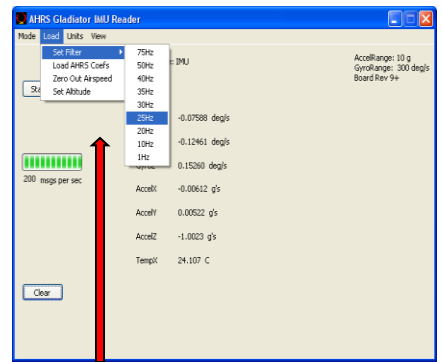
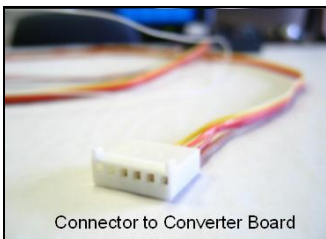
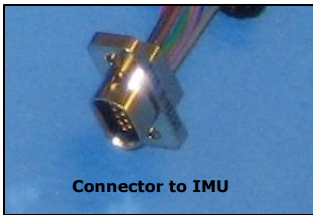
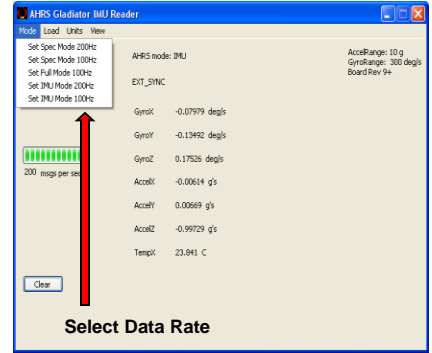
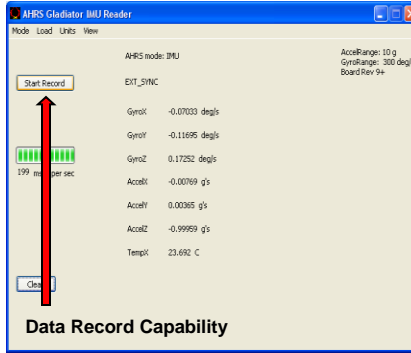
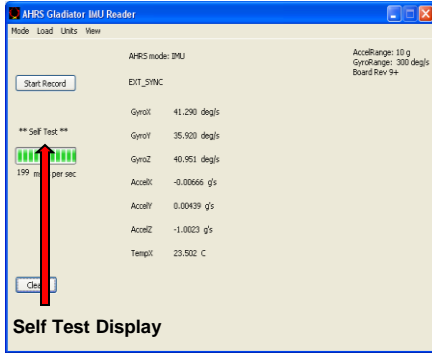
# LandMark™ 20IMU eXT SDK

LandMark™ 20 IMU eXT SDK

LMRK20IMU eXT-DEMO-120

The LandMark™ 20 eXT Software Development Kit (SDK) is an optional product to assist first time users of the LandMark™ 20 IMU eXT in order to facilitate a rapid setup, test and use of the unit. Please contact the factory or your local Gladiator Representative for in-country service and support at [www.GladiatorTechnologies.com](http://www.GladiatorTechnologies.com).

The LandMark™ 20 eXT SDK includes all cabling required to interface directly from the IMU's RS485 interface to a PC's USB interface. Also included is a RS485 to USB converter, cabling and mating connectors. The converter cable includes battery powered power supply (there is also wiring on the cable to enable the user to supply their own +3.0V to +4.2V power) and a self-test switch. The battery power supply uses three 1.5 Volt AA batteries (included with shipment) and supplies user battery power on the IMU for about 19 hours typical. In addition, PC display software is included which enables the user to display each channel of rate, acceleration and temperature as well as to monitor Self Test parameters. The software also enables the user to record data sets of their choosing in .CSV format for export in Excel or other user database. Many other features allow user selectable setting of the bandwidth filter and output data rate.



Specification subject to change without notice.



**Gladiator Technologies, Inc.**



Copyright © 2009 Gladiator Technologies, Inc.

**Sold Through:**

LKD Aerospace, Inc. Snoqualmie, WA 98065

Tel: (425) 396-0829 Fax: (425) 396-1129

Email: [sales@gladiatortechnologies.com](mailto:sales@gladiatortechnologies.com)

Web: [www.gladiatortechnologies.com](http://www.gladiatortechnologies.com)

Rev. Jul1009

SN: 0001