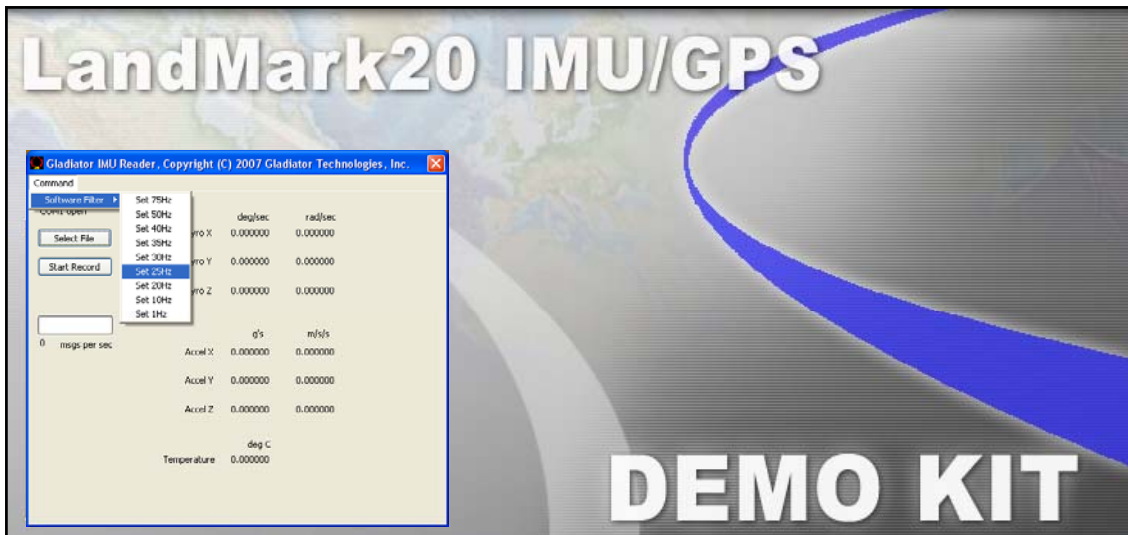
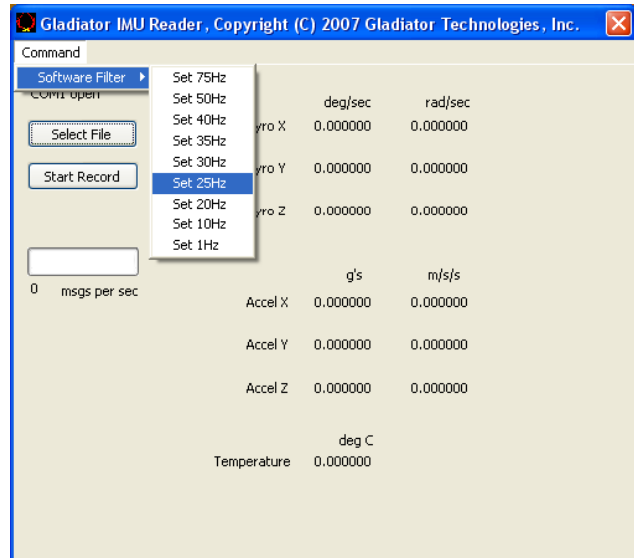


LANDMARK20 IMU DEMO KIT



- Turn-Key Solution for LandMark20 IMU on User's PC
- All Cabling, Interface Connectors, and Software Included and Ready for Use
- Easy Integration of Direct IMU RS485 to PC's RS232 or USB Interface
- Includes PC Display Software
- Data Record Capability
- User Defined Bandwidth Settings and Data Output Rate on IMU
- Self-Contained Power Supply with either Internal Battery or User Supplied Power
- Battery Supply Has 30 Hours of Operating Life *Typical*
- Self-Test Switch



Gladiator Technologies, Inc.

Copyright © 2007 Gladiator Technologies, Inc.

Rev. May1508
SN: 0001

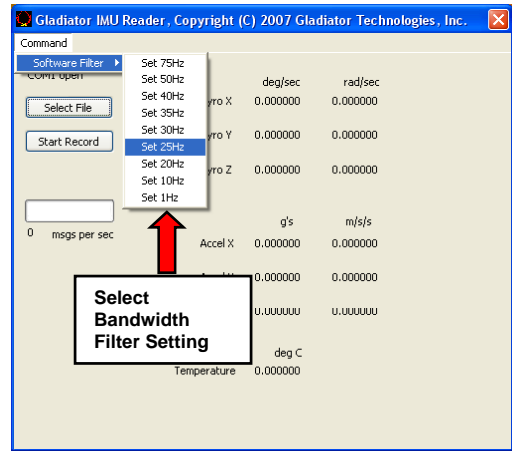
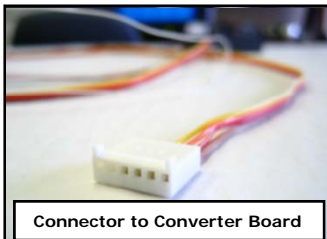
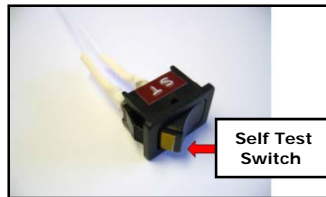
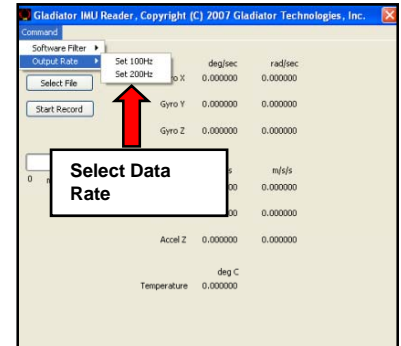
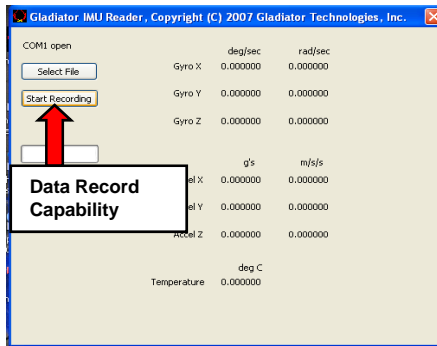
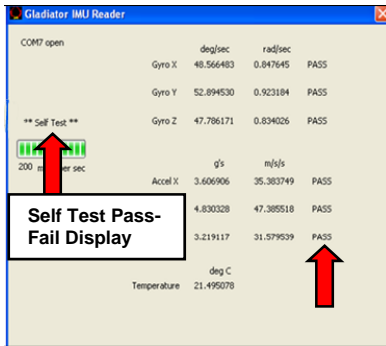
LandMark20 IMU DEMO KIT

LandMark20 IMU DEMO Kit

LMRK20IMU-DEMO-110

The LandMark20 Demonstration Kit is an optional product to assist first time users of the LandMark20 in order to facilitate a rapid setup, test and use of the unit (P/N: LMRK20IMU-DEMO-110). Please contact the factory or your local Gladiator Representative for in-country service and support at www.GladiatorTechnologies.com.

The LandMark20 Demonstration Kit includes all cabling required to interface directly from the IMU's RS485 interface to a PC's RS232 or USB interface. Also included is a RS485 to RS232 converter, cabling and mating connectors. The converter cable includes battery powered power supply (there is also wiring on the cable to enable the user to supply their own +3.0V to +4.2V power) and a self-test switch. The battery power supply uses three 9 Volt AA batteries (included with shipment) and supplies user battery power on the IMU for about 30 hours typical. In addition, PC display software is included which enables the user to display each channel of rate, acceleration and temperature as well as to monitor Self Test Pass parameters. The software also enables the user to record data sets of their choosing in .CSV format for export in Excel or other user database. Many other features allow user selectable setting of the bandwidth filter and output data rate.



Specification subject to change without notice.



Gladiator Technologies, Inc.

Copyright © 2007 Gladiator Technologies, Inc.

Sold Through:

LKD Aerospace, Inc. Snoqualmie, WA 98065

Tel: (425) 396-0829 Fax: (425) 396-1129

Email: sales@gladiatortechnologies.com

Web: www.gladiatortechnologies.com

Rev. May 15/08

SN: 0001